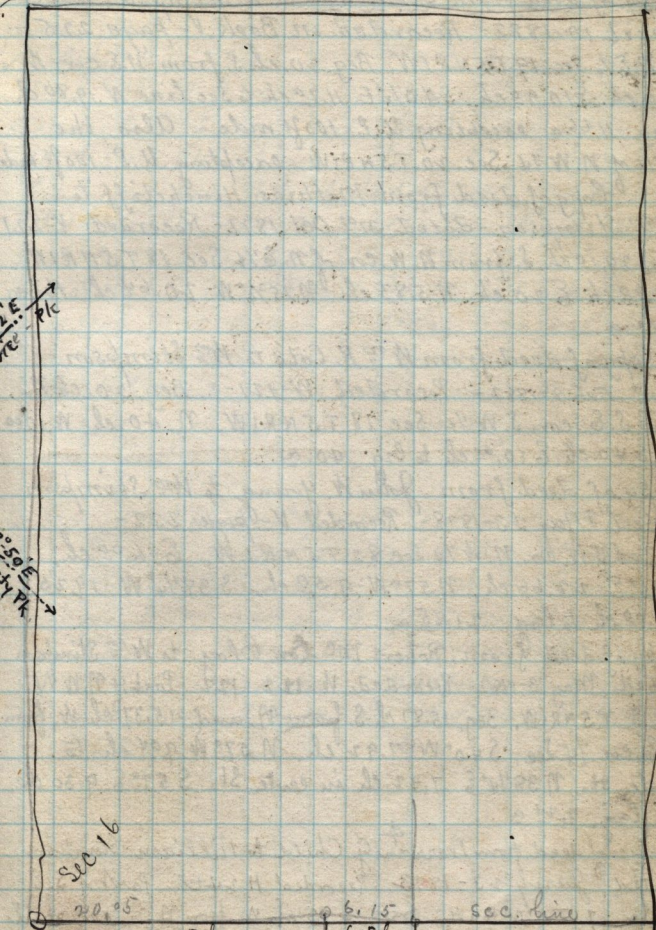


Nov. 26-1888.

ordered to here

✓ S. W. 1/4 Sec 16-T6NR2W.



2.5' E
PK

50' E
PK

Sec 16

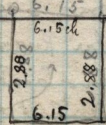
20.05

20.05 ch.

6.15

6.15 ch

sec. line



Sec 21 ✓

to be conveyed by
John & Mary Ann Collins
to Mrs. Helen Ward

nots. or strips $\frac{25}{100}$ ch in width
along W. side to be left out
of deed